

Mini Animal Scavenger Hunt

Insect Room

Find the **Western Pygmy Blue Butterfly**, the smallest butterfly in North America.



Introductory Hall

Find the **smallest humerus bone** in the skeleton case.  Who does it belong to?

Find the **rattlesnake eyes** used in the taxidermy exhibit.



World of Birds

Find the **smallest egg**. Who does it belong to? _____



McElroy Hall

Find the **Royal Antelope**, the smallest antelope.



Find the **lynx**, the smallest of the big cats.



Find the **smallest skull** on display. Who does it belong to? _____



Sheep and Goat Mountain

Find the **animal on the mountain that is not a sheep or a goat**.



Find the **baby wild boars**. Hint: They're on the way to Arizona by Night!



Arizona By Night

Who's peeking out of the **saguaro hole** before you enter the cave?

What is the **packrat** carrying? _____

How many **bats** are in this exhibit? _____



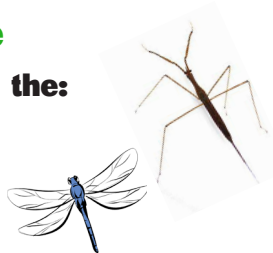
Bringing Back Wildlife

In the **Stream Exhibits**, find the:

Water Scorpion

Ferocious Water Bug

Dragonfly



Garter Snake

Great Plains Toad

How many **butterflies** are there? _____



In the forest habitat, find the **pygmy owl**.

Prehistoric

Which **tooth** is the smallest? **Woolly mammoth** **African elephant** **Columbian mammoth**